

 JOHNSON COUNTY

BOCC Work Session

December 13, 2004


Downtown Olathe Facilities and County Courthouse Study

Presented by Johnson County Facilities 

 JOHNSON COUNTY

AGENDA

- Introductions**
- Committees**
- Project Study Group**
- Process & Progress**
- Schedule**
- Questions & Discussion**

Presented by Johnson County Facilities 



INTRODUCTIONS

Qualifications of Team: Courts

HOK: 1,800 Courtrooms designed
12.500,000 SF of judicial facilities
\$2+ Billion in construction

CGL: 22 Court / Judicial Master Plans
Projects for 815 Courts
Mr. Carter: projects for 300+ counties



INTRODUCTIONS

Qualifications of Team: Detention

HOK: 75 County jail projects
31,000 detention beds
\$1.75 Billion in construction

CGL: 67 County jail planning projects
36,000 detention beds
\$2.1 Billion in construction





COMMITTEES

Steering Committee

Paul Morrison

Hon. Steve Tatum

Hon. Steve Leben

Michael B. Press

Todd Pelham

Michael Youngken

Walter Way

Bob Keller

Dean Palos

Rick Biery

Joe Waters

Neal Angrisano

District Attorney

District Court Judge

District Court Judge

County Manager

Capital Improvements

Director of Corrections

Colonel, Sheriff's Dept.

Captain, Sheriff's Dept.

Planning Director

Olathe Pub. Works Director

Facilities Director

Facilities Deputy Director

Presented by Johnson County Facilities



COMMITTEES

**District Court Vision and
Mission Committee**

Presented by Johnson County Facilities





JOHNSON COUNTY

PROJECT STUDY SCOPE
Overall Scope

Develop a comprehensive action plan for addressing the needs of the District Courts, Courts related departments and other County departmental needs located in the downtown Olathe area beginning with the preliminary data as defined and updated in the Strategic Facilities Master Plan (SFMP)

Presented by Johnson County Facilities



JOHNSON COUNTY

PROJECT STUDY SCOPE
Phase I & Criminal Justice Improvement Study

Analyze existing conditions and operations, define the county's future space and operational needs, develop preliminary strategies.

Conduct a parallel study of the criminal justice system and its relation to County detention operation.

Presented by Johnson County Facilities





PROJECT STUDY SCOPE
Phase II

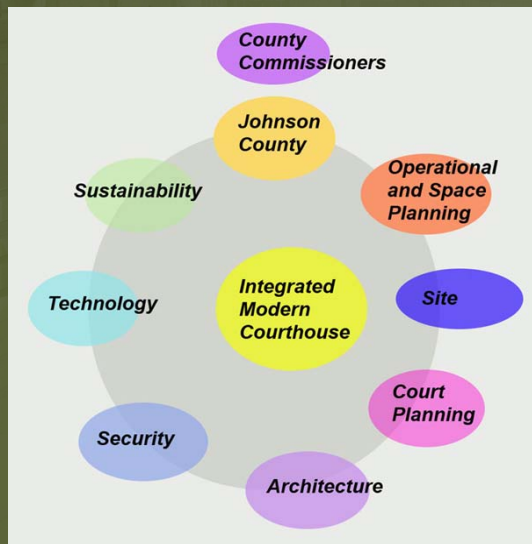
Develop a definitive space and operational program with a strategy to address future capital project needs, including:

- **Site study analysis**
- **Reconfiguration / reuse analysis of courthouse and existing downtown properties**
- **Conceptual design for capital investment**
- **Capital project budget establishment**

Presented by Johnson County Facilities



PROCESS & PROGRESS
Overall



Presented by Johnson County Facilities





PROCESS & PROGRESS – PHASE I

Analyze Existing Situation & Define Future Needs

- **Identify / define future operational and functional concepts for the Courts and County departments**
- **Identify / define strategic capital investments for the District Courts and other County departments**
- **Develop District Court space and operational needs**
- **Develop and analyze potential strategic options**
- **Develop preliminary site assessments**

Presented by Johnson County Facilities



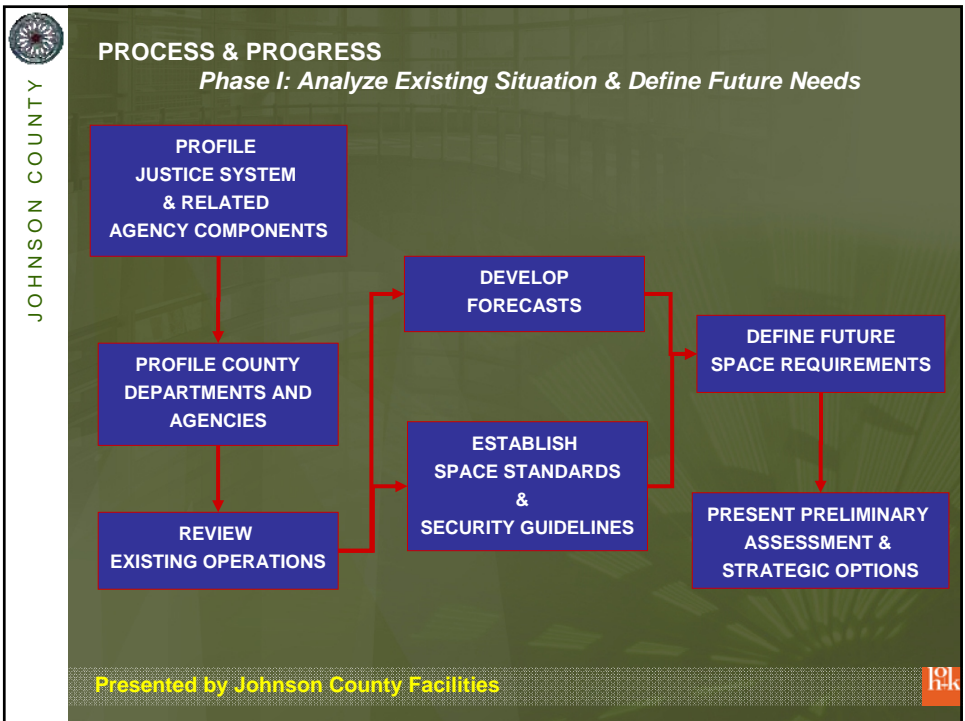
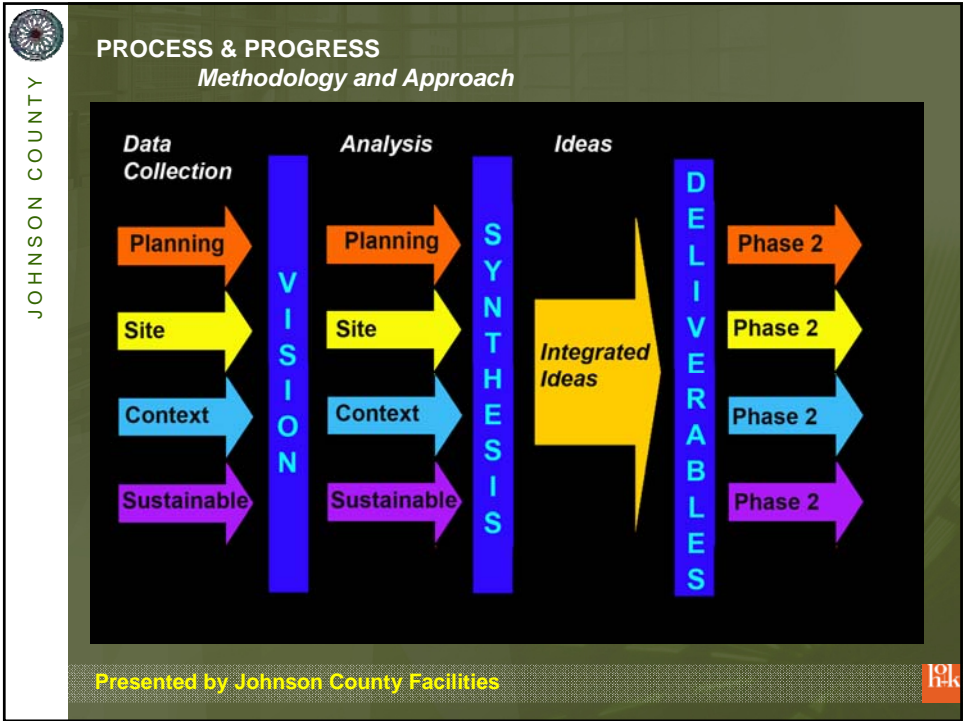
PROCESS & PROGRESS – PHASE II

Pre-Design

- **Refine the Phase I program information**
- **Develop reuse analysis and renovation concepts for the Courthouse and Administration Building**
- **Develop capital investment concepts**
- **Capital budget development**
- **Conduct a site analysis and feasibility study**
- **Analyze possible procurement types**

Presented by Johnson County Facilities





JOHNSON COUNTY

PROCESS & PROGRESS Profile Court System & Related Agency Components

CLARIFY PROJECT GOALS

DEVELOP SURVEY QUESTIONNAIRE

COMPILE HISTORIC DATA

REVIEW PREVIOUS MASTER PLANS

	1993	1994	1995	1996	1997	1998	1999	2000	2001	2002	Growth 1993-02
Total Population	1,995,262	2,027,375	2,088,265	2,124,885	2,157,208	2,189,719	2,221,630	2,253,362	2,285,319	2,317,478	15.9%
Juvenile Population	494,052	503,781	513,054	522,264	531,561	540,793	549,976	559,211	568,491	578,952	16.4%

Case Type	Case Filings											
Juvenile Delinquency	1,176	1,181	960	814	871	907	1,255	1,311	999	1,260	991	9%
Juvenile Dependency	19,707	21,742	20,375	19,311	19,140	18,791	18,941	16,817	14,635	13,107	-33%	

Type	Children Count											
Dependency-Children	2,174	2,132	1,825	1,471	1,622	1,823	2,467	1,822	1,823	2,404	14%	

Case Type	Ratio Filings to 1,000 Population											
Juvenile Delinquency	2.8	2.8	2.18	1.8	1.8	1.8	2.3	1.8	1.8	2.3	4%	
Juvenile Delinquency	29.8	43.7	40.5	37.0	36.4	34.8	30.8	30.7	25.9	21.0	-42%	

Presented by Johnson County Facilities

JOHNSON COUNTY

PROCESS & PROGRESS Profile Court System & Related Agency Components

CONFIRM PROJECT GOALS

PROFILE DEPARTMENTS

IDENTIFY SPACE STANDARDS

Building/Department	Existing DCSF	Existing Office Staff	Existing DCSF Staff	Proposed DCSF Staff
Historic Courthouse Office Building				
County Commission	1,170	1	274	285
County Administration Office	8	1	8	200
Auditor	487	1	164	200
County Attorney	182	1	182	200
County Clerk	434	1	434	175
County Engineer	2,103	1	791	300
County Health Services	4,162	10	442	400
County Jail	279	1	279	300
Fiscal	495	2	203	200
GIS/Mapping	571	1	208	200
Grant Administration	134	1	143	200
Health - Environmental	284	1	14	200
Health - Environmental	1,830	11	562	270
Human Resources	851	5	170	200
Information Technology	1,256	1	129	200
Local Water Quality	407	1	237	270
Open Lands Board	139	1	139	200
Planning	1,860	1	252	270
Superintendent of Schools	342	2	341	300
Treasurer - Main Office/Outgoing Tax	2,110	1	286	400
Treasurer - Motor Vehicle	1,332	11	139	200
Treasurer - Transportation	22,141	93	211	270
Water Treatment Center				
Water Services	496	2	225	200
Water Treatment				
Health Services Building	1,200	11	351	370

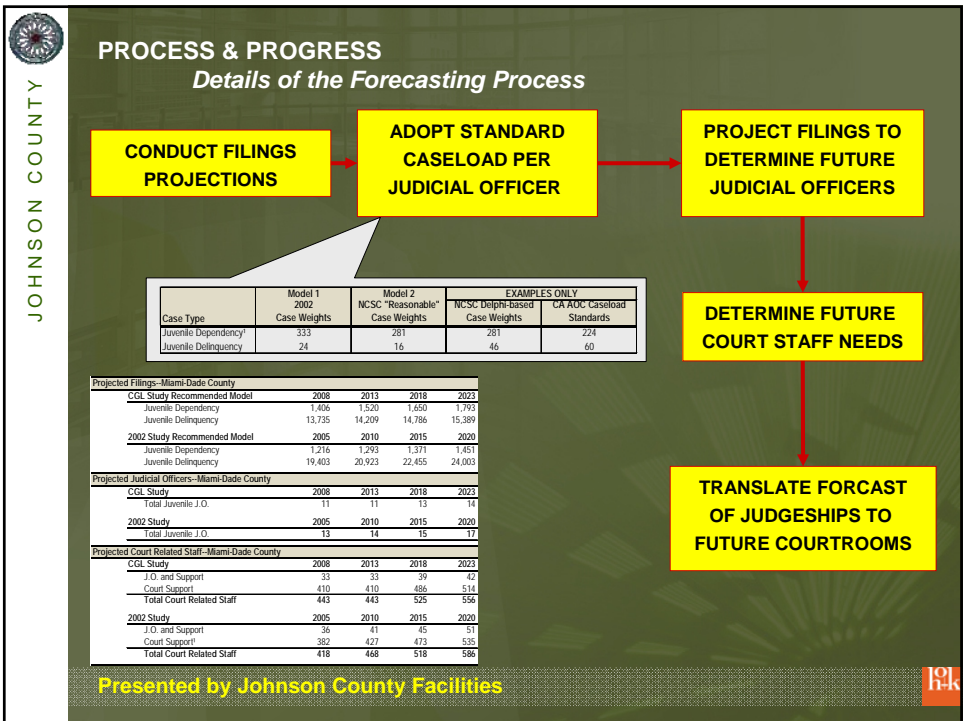
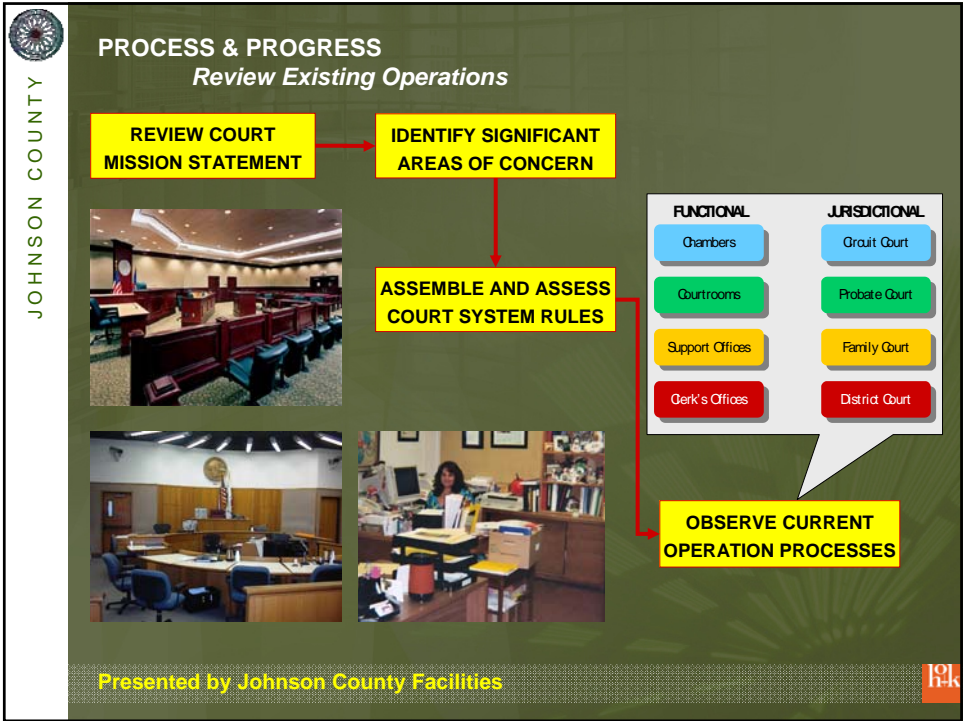
Department	Existing	Proposed			% Chg 04-25
		2010	2015	2020	
County Commission	5	6	6	7	40%
County Administration Office	1	2	2	3	200%
Auditor	3	3	3	4	33%
County Clerk - Accounting	3	4	4	5	66%
County Clerk - Elections	3	4	4	5	66%
County Clerk - Records	10	10	12	13	30%
Comptroller	1	3	4	5	500%
Health Services	4	5	5	6	50%
Fiscal	2	3	3	4	100%
GIS/Mapping	3	3	3	4	65%
Grant Administration	2	3	4	5	200%
Health - Administration	4	6	6	7	75%
Health - Environmental	11	10	9	10	60%
Health - Human Services	15	19	21	25	63%
Human Resources	5	6	7	8	60%
Information Technology	7	10	12	14	100%
Local Water Quality	3	3	4	5	50%
Open Lands Board	1	2	2	2	100%
Planning	9	10	11	12	33%
Superintendent of Schools	2	2	2	3	50%
Treasurer - Motor Vehicle/Outgoing Tax	7	7	8	10	50%
Treasurer - Motor Vehicle	10	10	11	12	20%
Total	101	142	148	161	60%
Average Annual Increase		4.8%	4.5%	2.8%	2.2%
Annual Increase from Existing		4.8%	4.0%	3.9%	3.8%

Source: Office of Information Technology, February 2004 and updated March 2004.

PROJECT FUTURE PERSONNEL LEVELS

PROJECT FUTURE SPACE NEEDS

Presented by Johnson County Facilities



JOHNSON COUNTY

PROCESS & PROGRESS

Establish Space Standards & Security Guidelines

REVIEW PREVIOUS MASTER PLAN STANDARDS

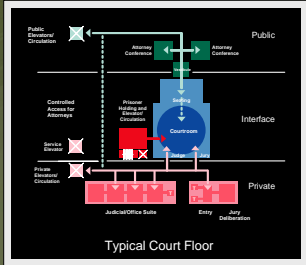
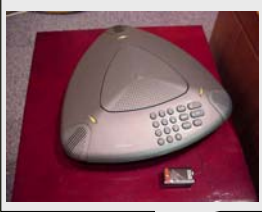
→

IDENTIFY SPACE STANDARDS TO BE UTILIZED


INCORPORATE SECURITY GUIDELINES

→

REVIEW TECHNOLOGY FOR SPACE & SECURITY

Presented by Johnson County Facilities



JOHNSON COUNTY

PROCESS & PROGRESS

Define Future Space Requirements

TRANSLATE FUTURE NEEDS INTO SPACE ESTIMATIONS

→

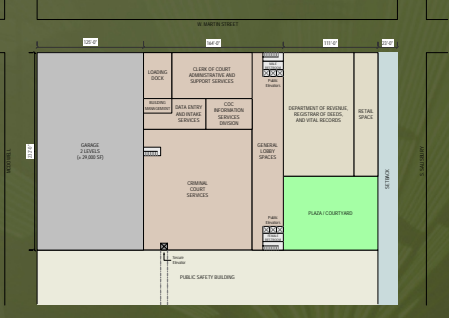
DEVELOP FUNCTIONAL RELATIONSHIP DIAGRAMS

→


DETERMINE FUTURE PARKING & SERVICE DELIVERY RQMTS

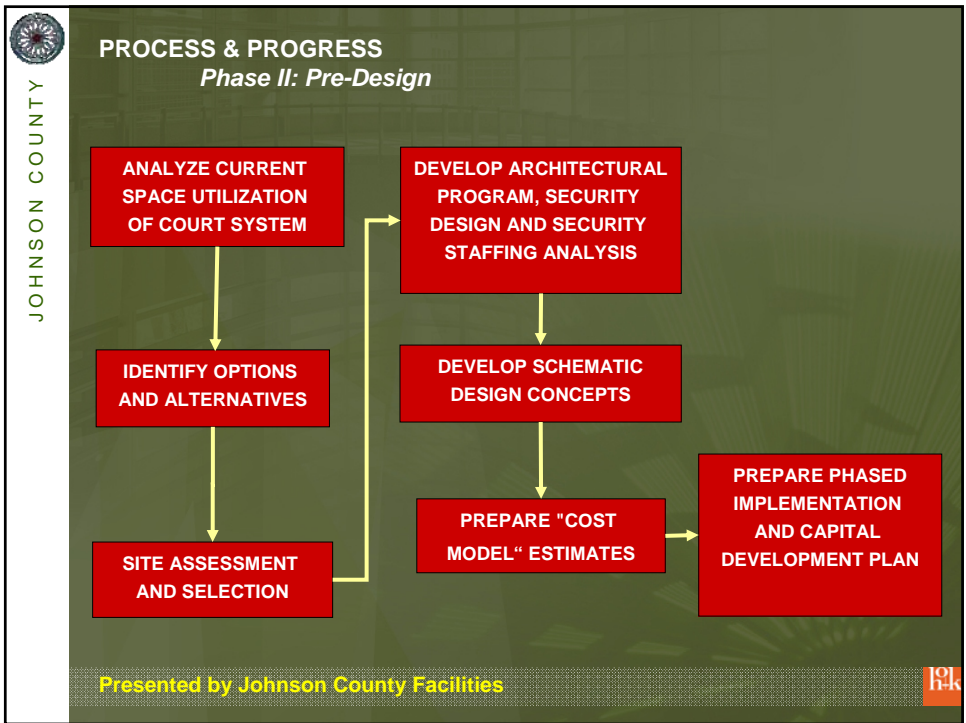
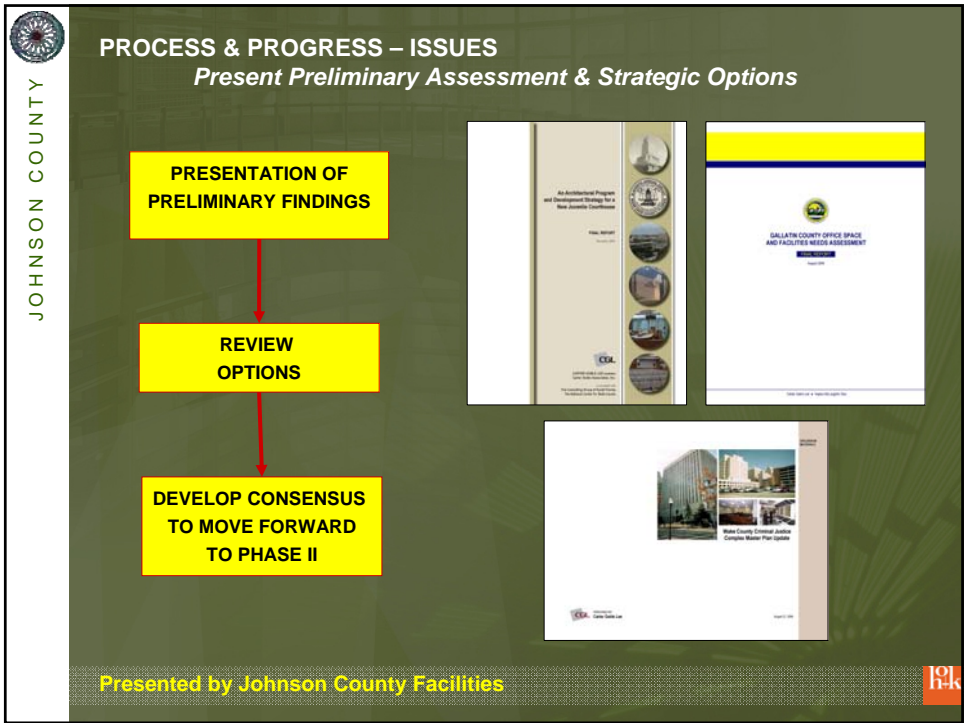
	Space Standard	2015		2030	
		Projected Staff/Spaces	Space Need	Projected Staff/Spaces	Space Needs
Criminal Court Projections					
Criminal Courtrooms					
Large Superior Courtroom	4,664	1	4,664	1	4,664
Standard Superior Courtroom	2,714	3	17,252	4	16,205
Sub-Total Superior Courtrooms		4	17,608	5	21,809
District Criminal Courtrooms					
Standard District	4,450	4	17,800	5	22,250
District Traffic	5,284	6	31,704	8	42,272
Small District	1,074	2	3,956	2	3,956
Sub-Total District Courtrooms		12	53,460	15	68,478
Total Criminal Courtrooms		16	71,668	20	90,287
Criminal Court Judges' Sets					
Superior Judge's Set	1,031	4	4,123	5	5,154
District Judge's Set	207	12	10,881	15	13,801
Total Criminal Judges' Sets		16	15,004	20	18,955
Total Criminal Courtrooms and Judges' Sets			86,672		109,242
Criminal Court Related Functions					
District Attorney	333	78	25,877	111	37,137
Indigent Counsel ¹	333	63	20,830	60	20,410
Superior Court Support	209	8	1,824	9	1,863
District Court Support	209	6	1,252	7	1,405
Clerk of Court	290	52	15,048	63	18,396
Jury Assembly	20	233	4,713	269	5,260
Alternative Programs	209	5	1,046	7	1,465
Court Related Programs	233	14	2,929	14	10,230
Sub-Total Court Related Functions		345	78,389	332	109,736
Total Criminal Court Space/Staff Needs		261	164,459	352	214,769

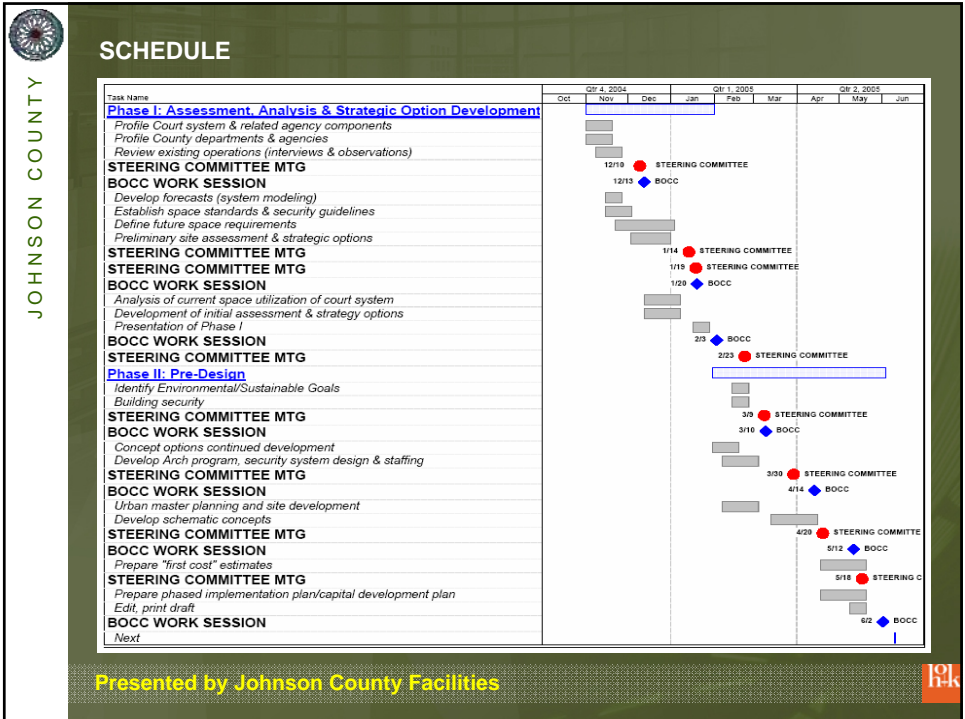
Source: Center for Justice Law, March 2013. Updated and extended in July 26, 2014.
 Note:
 1. Indigent Counsel staff estimates based upon 80% of District Attorney staff projections.
 2. Clerks based on 50% of total clerks.
 3. Jurors based on 74% of total jurors (302). Not included as a part of the staff table, but included in parking calculations.



Presented by Johnson County Facilities







Questions

**Downtown Olathe Facilities and
County Courthouse Study**

Criminal Justice Improvement Study

Presented by Johnson County Facilities

