
6 JOHNSON COUNTY GOVERNMENT

Pursuant to the Constitution and laws of the State of Kansas and Home Rule Charter, the legislative powers of County Government are vested in a seven-member Board of County Commissioners, which exercises general authority over the County's business and affairs to ensure the general health, safety, and welfare of the public. The Board of County Commissioners has exclusive power to enact, amend, and repeal local legislation, levy taxes, make appropriations, adopt budgets, and make appointments to certain offices, boards, and commissions.

The Board of County Commissioners conducts its business in accordance with the requirements of the Kansas Open Meetings Act and the Kansas Open Records Act. Regular business sessions are conducted each Thursday beginning at 9:30 a.m. in the Board's Hearing Room located on the third floor of the County Administration Building in downtown Olathe.

The chairman of the Board of County Commissioners is a four-year elected at-large position. The members of the Board of County Commissioners are respectively elected from each of six contiguous and equally populated commission districts to serve four-year terms of office. Each member has one vote and a simple majority of the Board of County Commissioners is sufficient to enact local legislation in the absence of higher voting requirements. As the County's final fiscal authority, the Board of County Commissioners is responsible for adopting an annual budget capable of financing the operations of the government for the fiscal year.

The affairs of the County government are conducted within a number of government departments, each of which is responsible for a particular aspect of the broad range of County services provided. Generally, departments are headed by a director-level position (some of whom are elected officials), which controls a system of staffed positions throughout the department. This system of organization by department is the basis for the context of this study, with needs assessments and planning strategies indicated in a department-by-department format. As with any large organization, the structure of the Government of Johnson County is constantly in a state of relative change and departmental conditions as they are indicated must be viewed as a "snapshot in time". Where possible, departments undergoing significant changes or organizational shifts are indicated in the narrative information.

FUNCTIONAL CLUSTERS

For the purposes of the study, and to simplify the large array of functional considerations in the study, the departments, or components of departments, were



grouped into "functional clusters" which organizes departments with similar missions or operational modalities together. The functional cluster groupings are:

The Governmental Services Group

- Automated Information Mapping Systems (AIMS)
- County Appraiser
- Archives and Records Management
- Budget and Financial Planning
- Board of County Commissioners
- County Manager
- Emergency Communications
- Emergency Management
- Emergency Medical Services
- Environmental Department
- Facilities Department
- Financial Management
- Human Resources
- Information Technology Services
- Legal Services
- Planning and Codes
- Print Shop
- Records and Tax Administration
- County Treasurer
- Wastewater

Court Functions

- Corrections
- Courts Services
- Clerk of the District Court
- District Attorney
- District Courts
- District Court Trustee
- Justice Information Management Systems (JIMS)
- Law Library
- Sheriff Administration
- Sheriff Civil Division
- Sheriff Court Security
- Sheriff Warrants

Human Services

- Corrections
- Court Services



- Human Services and Aging
- Johnson County Developmental Supports
- Mental Health
- Nursing Center
- Public Health

Detention and Law Enforcement

- Adult Detention
- Juvenile Detention
- Juvenile Intake and Assessment Center
- Juvenile Field Services
- Sheriff's Operations

Non-Related Services

- Airport Commission
- Election Office
- Emergency Dispatch Operations Back Up
- Extension Council
- Infrastructure and Transportation
- Department of Motor Vehicles
- Johnson County Museum

Departments Not Addressed In This Plan

- Johnson County Libraries
- Parks and Recreation Facilities
- Wastewater Treatment Plants, Holding Tanks, and Pump Stations
- Airport Properties
- Infrastructure Support Buildings
- Parking lots

EXISTING FACILITIES OCCUPIED BY JOHNSON COUNTY

Johnson County Government currently occupies a broad range of facilities located throughout the County. Facilities that serve the departments involved in this study were given general assessments as to the adequacy of the facility for its current functional use and the potential for future use. A general physical evaluation was conducted with a site analysis of the opportunities and constraints that are present relative to future potential. Consideration was given to factors such as general condition, age, usable area, security, and parking. Information relative to individual structures appears in the discussions for each of the sites; however these general conclusions may be made:

- The county operates in 112 locations, 73 of which are owned, 26 are leased, and 13 are shared spaces with other government entities. The total



area of these facilities is approximately 1.9 million square feet (excluding Library and Parks and Recreation facilities). The age of the buildings follows the growth of the County, with over 90 percent constructed since 1950. A few of the oldest facilities were constructed in the late 1800's with the newest completed quite recently and some still under construction.

- County buildings are generally in moderate to excellent condition, in part due to the County's relatively strong preventative maintenance programs. Exceptions do exist, such as the building occupied by the Juvenile Intake and Assessment Center and the Public Works building, both of which are near the end of useful service.
- Most County buildings are utilized effectively for functions suited to them. The administration building, detention facilities, and others are good examples of effective utilization. A significant exception, however, is the Johnson County Courthouse. Among many shortcomings at this facility are security (lack of secure circulation for inmates, public, and Judiciary), undersized or absent support space for court functions and inappropriately sized and configured courtrooms. The overall space utilization and operational adequacy of the Courthouse is severely hampered by these deficiencies. Further, the building offers little flexibility to correct these problems or to meet future challenges.
- The County operates several consolidated facilities in both owned and leased properties that are generally located well for service delivery and well-suited for multi-tenant operations. The County offices at the Northeast Office Building are examples of this.
- The space needs of a number of departments will be addressed in the short term by the currently approved projects; however the majority of departments appear overcrowded with little opportunity for expansion within the current confines of their space.



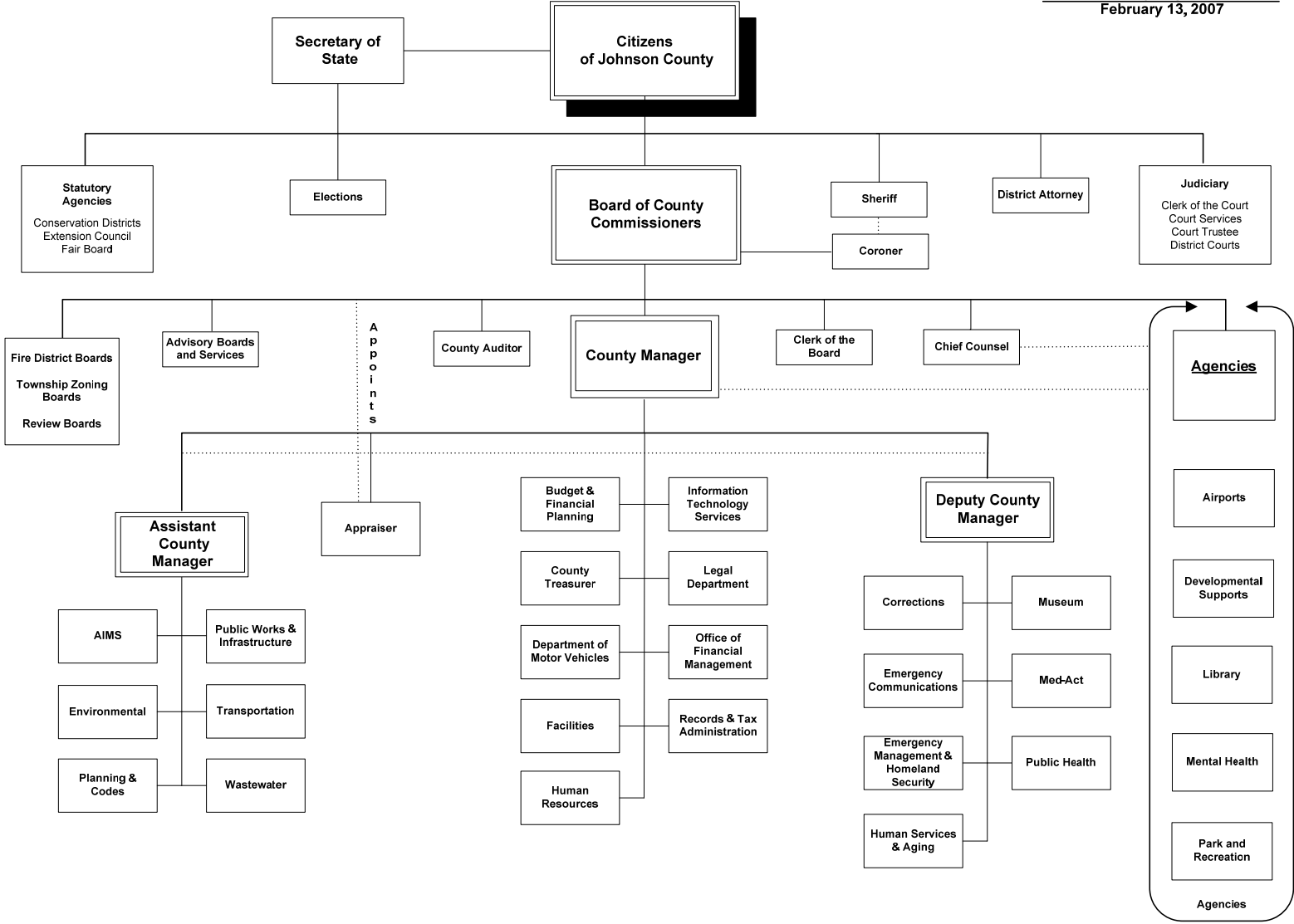


Figure 17: Johnson County Organization Chart

